

COMPANY **7** RIVERDALE

<u>STREET</u>	<u>HUNDRED BLOCK</u>	<u>MAP PAGE</u>	<u>DETAIL MAP</u>
<u>A</u>			
ALBION RD	4500 - 4600	5	
AMHERST RD	4500 - 4700	5	
<u>B</u>			
BALTIMORE AVE	5100 - 5700	3	
	5800 - 6200	1	
	6300 - 6700	5	
	6800 - 7000	7	
BEALE CIRCLE EAST	6200	1	
BEALE CIRCLE WEST	6200	1	
BEECHWOOD RD	4400 - 4600	7	
<u>C</u>			
CARLETON TERR	6900	7	
CLEVELAND AVE	5800 - 5900	1	
CLEMSON RD	4600	7	
CHURCH PL	(none)	3	

COMPANY **7** RIVERDALE

<u>STREET</u>	<u>HUNDRED BLOCK</u>	<u>MAP PAGE</u>	<u>DETAIL MAP</u>
<u>D</u>			
DARTMOUTH AVE	6800 - 7100	7	
DREXEL RD	4600 - 4700	7	
DUPONT CIRCLE	200	1	
<u>E</u>			
EAST WEST HWY	4400 - 4600	5	
Crescent City Nursing Home	4409	1	D9, D9A
EAST WEST HWY	4700 - 5000	6	
<u>F</u>			
FORDHAM CT	7000	7	
FORDHAM LANE	4500	7	
<u>G</u>			
GREENWAY DRIVE	5300	4	
<u>H</u>			
HAMILTON ST	4300 - 4500	3	
HARRISON AVE	5800 - 5900	1	
HOLLY HILL RD	4400	7	

COMPANY 7 RIVERDALE

<u>STREET</u>	<u>HUNDRED BLOCK</u>	<u>MAP PAGE</u>	<u>DETAIL MAP</u>
<u>J</u>			
JEFFERSON ST	5400	4	
<u>K</u>			
KENILWORTH TERR	5400	4	
KENNEDY ST	4400 - 4500	3	D6
<u>L</u>			
LAFAYETTE AVE	5900 - 6200	2	
	6300 - 7000	6	
LONGFELLOW ST	4400 - 4500	3	D6
	4700 - 4800	2	
LUSTINE ST	5600 - ?	3	D6
<u>M</u>			
MADISON ST	4300 - 4500	1	
Dematha High School	4313	1	D6,D6A
	4600 - 4900	2	
<u>N</u>			
NATOLI PL	6200	2	
NICHOLSON ST	4700 - 5000	2	

COMPANY **7** RIVERDALE

<u>STREET</u>	<u>HUNDRED BLOCK</u>	<u>MAP PAGE</u>	<u>DETAIL MAP</u>
<u>O</u>			
OAK RIDGE RD	6900	7	
OGLETHORPE ST	4400	1	
Oglethorpe Condominiums	4410	1	D5,D5A
	4700 - 5000	2	
OLIVER ST	4400 - 4600	1	
	4700 - 4800	2	
<u>P</u>			
PINE WAY	6700 - 6900	7	
POWHATAN ST	5300 - 5400	4	
<u>Q</u>			
QUEENSBURY RD	4400 - 4701	1	
Doctors Offices (Leland)	4404	1	D9,D9A
	4705 - 5000	2	
<u>R</u>			
RAVENSWOOD RD	4700 - 5000	6	

COMPANY 7 RIVERDALE

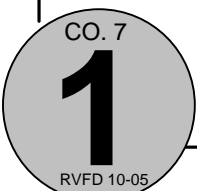
<u>STREET</u>	<u>HUNDRED BLOCK</u>	<u>MAP PAGE</u>	<u>DETAIL MAP</u>
RHODE ISLAND AVE	5600 - 5604 (OFF KENNEDY ST.)	3	
	6000 - 6200 (OFF QUEENSBURY RD)	1	
	6300 - 6500 (OFF QUEENSBURY RD)	5	
	6700 - 6900 (OFF ALBION RD)	7	
RITTENHOUSE ST	4700 - 4800	2	
	5000	6	
RIVERDALE RD	4500 - 4600	1	
	4700 - 5011	2	
	Riverdale Elementary School 5006	2	D8
	5023 - 5400	4	
	Calvert House Apartments 5023	4	D7
	Park Tanglewood Apartments 5309	4	D4, 4A
	Riverdale Towers 5313	4	D1, 1A
RIVERSIDE DR	5800 - 6000	2	
<u>S</u>			
SHERIDAN ST	4300 - 4600	5	
	4700 - 5000	6	
SPRING LANE	5400	4	
SOMERSET RD	4700 - 5000	6	

COMPANY **7** RIVERDALE

<u>STREET</u>	<u>HUNDRED BLOCK</u>	<u>MAP PAGE</u>	<u>DETAIL MAP</u>
<u>T</u>			
TANGLEWOOD DR		4	
TAYLOR RD	5300 - 5600	8	
	5700 - 6200	2	
	6300 - 6400	6	
TUCKERMAN ST	4300 - 4600	5	
	4700 - 5000	6	
<u>U</u>			
UNDERWOOD ST	4400	5	
<u>V</u>			
VAN BUREN ST	4400	5	
<u>W</u>			
WAKE FOREST DR	6900 - 7000	7	
WELLS PARKWAY	4400	5	

COMPANY **7** RIVERDALE

<u>STREET</u>	<u>HUNDRED BLOCK</u>	<u>MAP PAGE</u>	<u>DETAIL MAP</u>
44TH AVE	5500 - 5700 (OFF JEFFERSON ST)	3	D6
	5800 (OFF OGLETHORPE ST)	1	
	6000 - 6200 (OFF QUEENSBURY RD)	1	
	6300 - 6700	5	
44TH PLACE	6100 - 6200	1	
45TH PLACE	6300 - 6400	5	
46TH AVE	6000 - 6100	1	
	6300 - 6400	5	
47TH AVE	5500 - 5800	2	
	6300	5	
48TH AVE	5700 - 6200	2	
	6300 - 6400	6	
49TH AVE	6100 - 6200	2	
	6300 - 6400	6	
50TH AVE	5300	8	
51ST AVE	6300 - 6500	6	
54TH AVE	5400 - 6112	4	
	5600 Riverdale Towers Apartments	4	D1, D1A
	5609 River Crossing Apartments	4	
	5610 River Crossing Apartments	4	D3
	5410 - 5526 Riverdale Village West	4	D2
		4	D10
54TH PLACE		4	



SEE PAGE 5

4410

FROM 12 ↓

SEE PAGE 5

SEE PAGE 5

AVE

EAST WEST HIGHWAY

From 13 ←

From 1 →

6218 6204 6202

AVE

6219 6207

4409 East West Highway
Crescent Cities Nursing

4404

4415 Suntrust

6228 McDonalds

6209

Parking Lot

6200

PLACE

QUEENSBURY RD.

4401

6112

4415

6130 RITE AID

6108

6124

6109

6107

6100

6103

6101

6040

4416

4418

6040

44TH

44TH

6100

6022

6101

6025

4402

OLIVER ST.

OLIVER ST.

4401

4415

6038

LAUND.

6034 7-11

4410

4410

6038

6008

6006

6000

44TH

44TH

6009

1001

OGLETHORPE ST.

OGLETHORPE ST.

4317

5814

5810

5814

5810

5806

5804

5802

5800

5809

5803

5801

PARKING LOT

5814

5810

5806

5804

5802

5800

J.D. HALL

4318

4313

4323

44TH AVE

44TH

MADISON ST.

SEE PAGE 3

DeMatha H.S.

SEE PAGE 3

FROM 55 ↑

(ROUTE 1) 6200

BALTIMORE AVENUE

6000

5800

4500 4504 4600

WEST BEALE CIRCLE

EAST BEALE CIRCLE

4601 4603 4605

6209

Calvert Memorial Park

6220

6218

6216

6214

6210

6206

6202

6200

46xx

111112

24680

RHODE ISLAND

MARC

QUEENSBURY RD

4503

4513

4517 Exxon

4505

4601

6108

4600

6100

4701

6105

4504

4514

4600

6000

4501

4511

6103

4514

4601

6008

4600

4608

6000

46TH

RHODE ISLAND AVE

RIVERDALE RD.

OLIVER ST.

RIVERDALE RD.

OLIVER ST.

4501

5916 ON SIDE

4513 4515 4601 4611

5910

5909

5901

5900

5903

5910

6037

6035

6033

6040

6009

6009 TRAILER

6001

5817

5811

5803

5801

BALT.

5810

5810

5807

5805

5803

5801

4512

4522

200

ONLY ADDRESS ON DUPONT CIRCLE

DUPONT CIRCLE

HARRISON AVENUE

CLEVELAND AVENUE

MADISON ST.

4507

4519 PEPCO SUBSTATION

PARKING LOT

TRANSFORMER

SEE PAGE 3

SEE PAGE 3

SEE PAGE 6

48TH AVE

SEE PAGE 6

49TH AVE

TAYLOR AVE

CO. 7

2

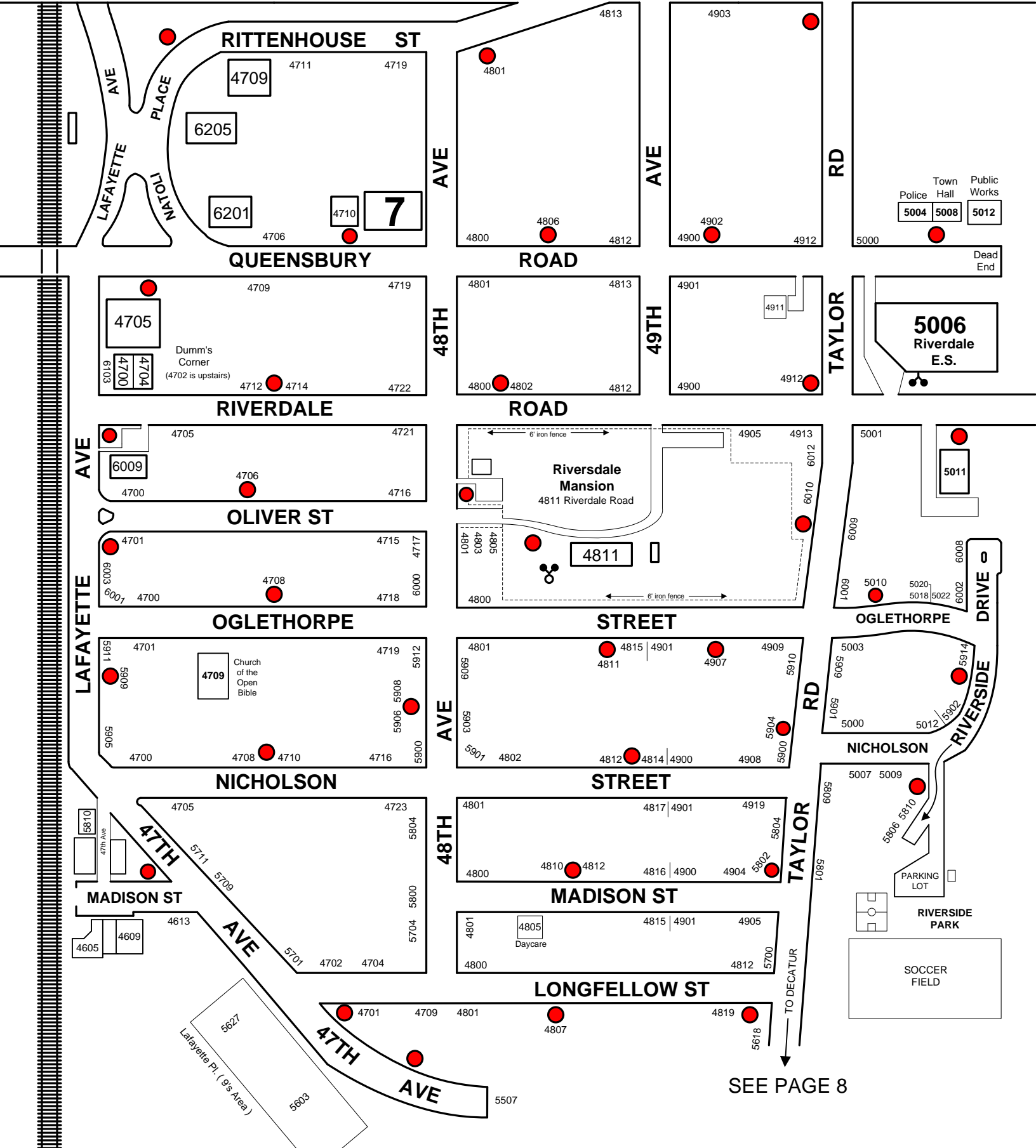
RVFD 12-05

To Baltimore Ave

EAST WEST HIGHWAY



To Kenilworth Ave



RITTENHOUSE ST

QUEENSBURY ROAD

ROAD

RIVERDALE ROAD

ROAD

OLIVER ST

OGLETHORPE STREET

STREET

NICHOLSON STREET

STREET

MADISON ST

MADISON ST

LONGFELLOW ST

47TH

47TH AVE

AVE

**5006
Riversdale
E.S.**

**Riversdale
Mansion**
4811 Riverdale Road

4709
Church of the Open Bible

RIVERSIDE PARK

SOCCER FIELD

SEE PAGE 8

Dead End

DRIVE

TAYLOR

TAYLOR

TO DECATUR

LAFAYETTE

AVE

LAFAYETTE

47TH AVE

PLACE

NAT'L

AVE

48TH

AVE

48TH

AVE

49TH

AVE

48TH

RD

TAYLOR

RD

RD

TAYLOR

RIVERSIDE DRIVE

TO DECATUR

Lafayette Pl. (9's Area)

Town Hall
Police 5004
Public Works 5008
5012

5006
Riversdale
E.S.

5011

5010
5020
5018
5022

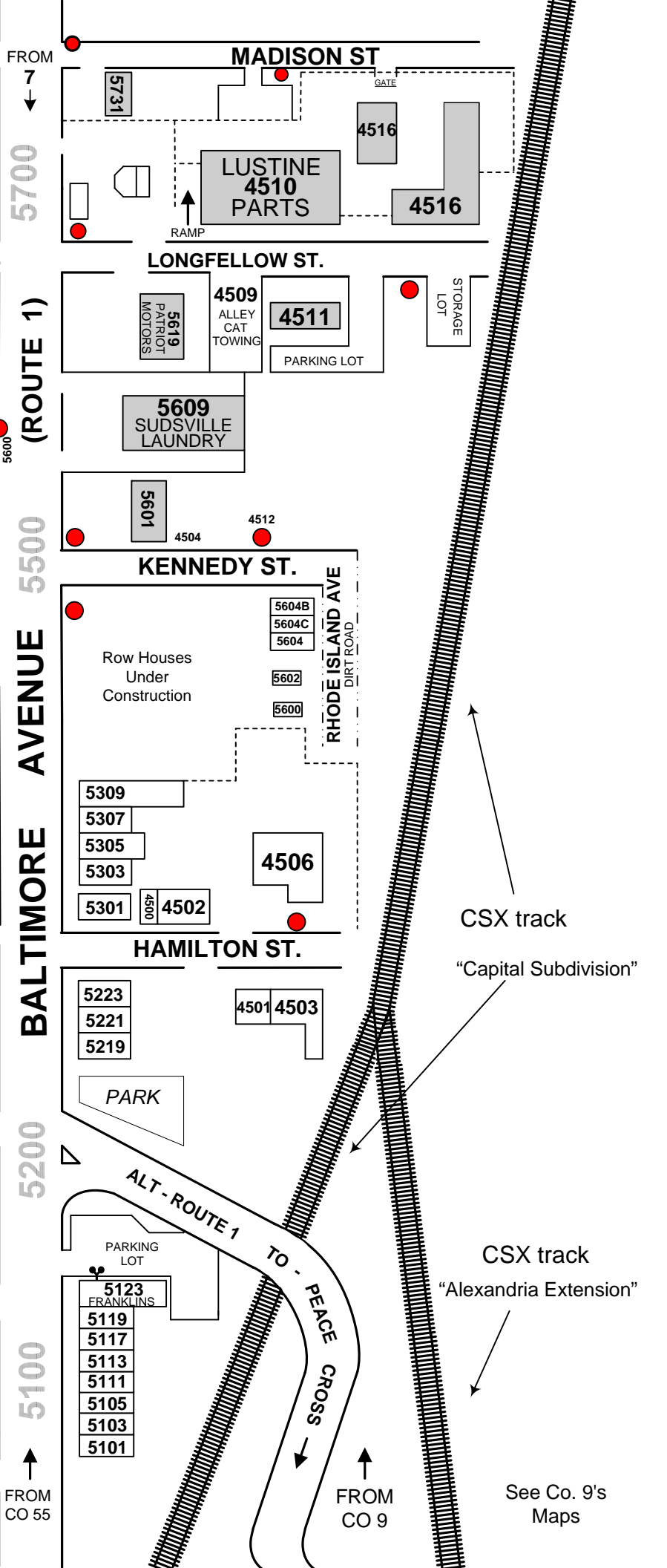
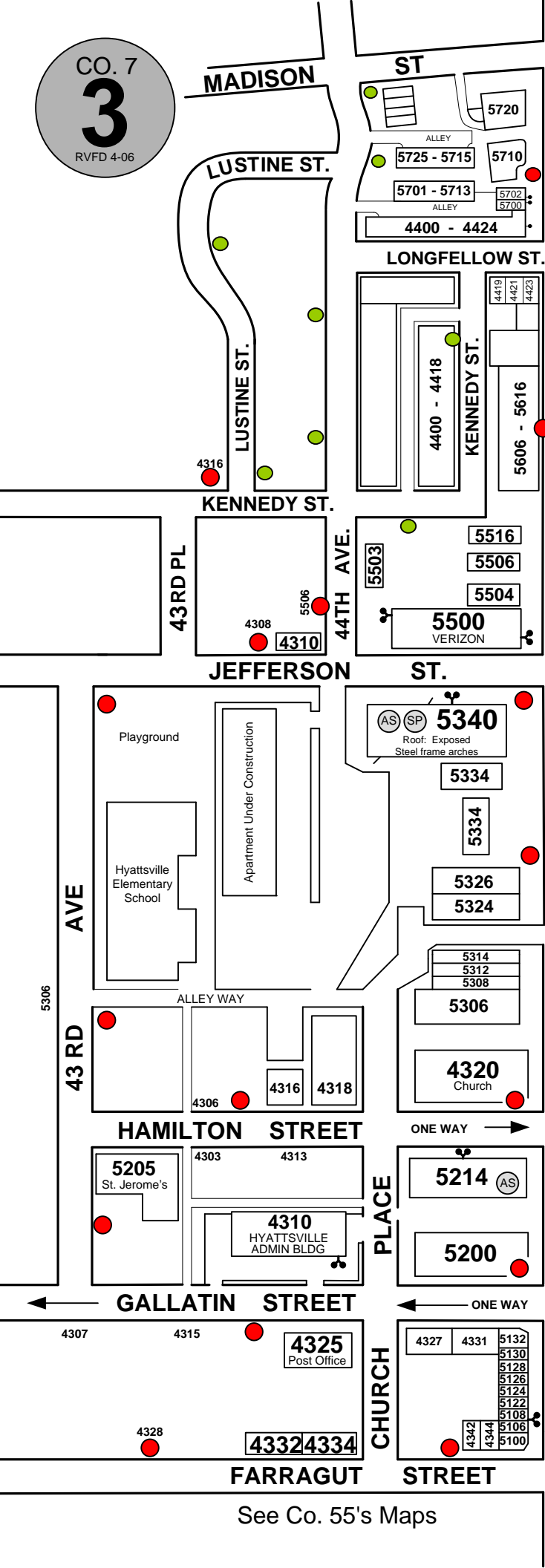
5012
5902
5914

5007
5009
5806
5810

PARKING LOT

SOCCER FIELD

TO DECATUR



See Co. 55's Maps

See Co. 9's Maps



To 495

To Baltimore Ave

EAST WEST HIGHWAY

To 13

FROM 7

RIVER
ANACOSTIA

TANGLEWOOD DR

TANGLEWOOD DR

(Northeast Branch)

Anacostia River Park

PARK

KENILWORTH AVE

To 9

- 5305
- 01-03
- 04-08
- 09-13
- 14-19
- 20-24
- 25-30

RIVERDALE ROAD

54TH AVE

ROAD

54TH AVE

JEFFERSON ST

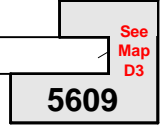
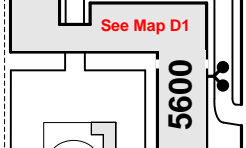
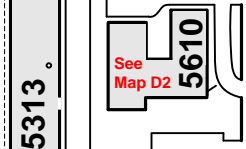
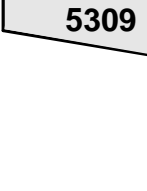
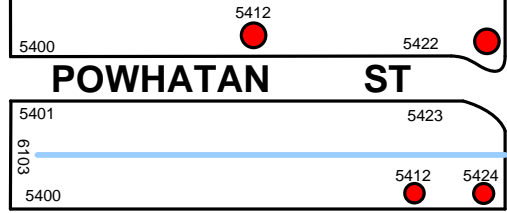
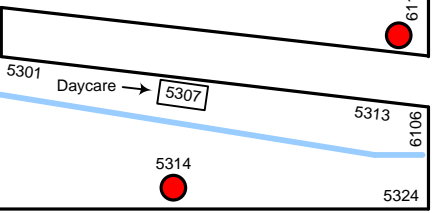
54TH AVE

SPRING LANE

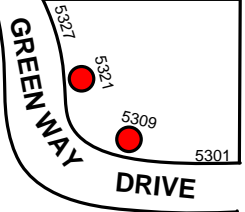
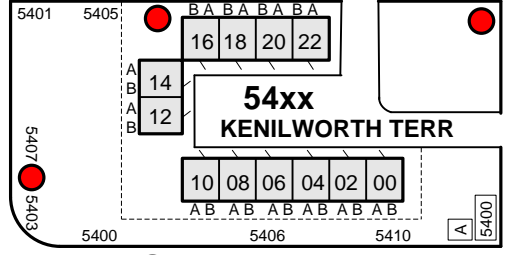
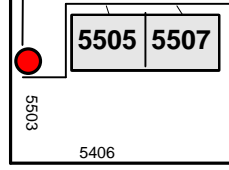
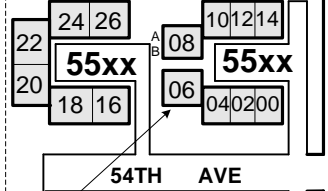
GREENWAY DRIVE

Shopping Center

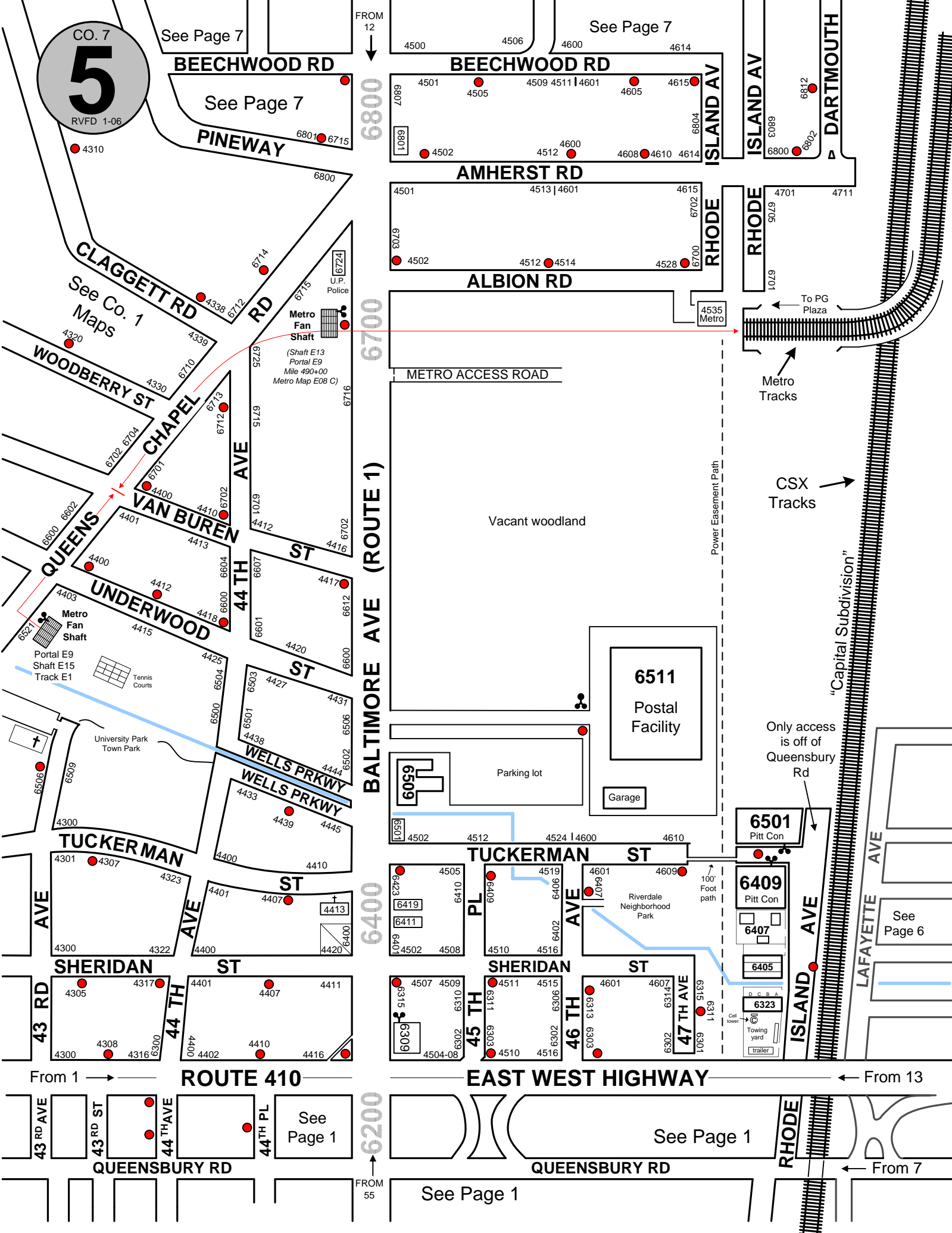
54TH PL



CAUTION:
EMPTY POOL
IN
BASEMENT
OF 5506 54TH
AVE



CO. 7
5
RVFD 1-06



See Page 7

See Page 7

See Page 7

FROM 12
6800

BEECHWOOD RD

ISLAND AV

DARTMOUTH

BEECHWOOD RD

PINEWAY

AMHERST RD

RHODE

RHODE

CLAGGETT RD

See Co. 1
Maps

ALBION RD

METRO ACCESS ROAD

To PG Plaza

Metro Tracks

CSX Tracks

6700

BALTIMORE AVE (ROUTE 1)

Power Easement Path

Vacant woodland

6511
Postal Facility

Only access is off of
Queensbury Rd

"Capital Subdivision"

Parking lot

Garage

6501
Pitt Con

6409
Pitt Con

See Page 6

WOODBERRY ST

CHAPEL RD

RD

QUEENS

VAN BUREN

AVE

UNDERWOOD

44 TH ST

ST

WELLS PRKWAY

WELLS PRKWAY

ST

TUCKERMAN

44 TH ST

ST

SHERIDAN

43 RD

ST

43 RD ST

44 TH PL

See Page 1

QUEENSBURY RD

EAST WEST HIGHWAY

See Page 1

QUEENSBURY RD

RHODE

See Page 1

FROM 55
6200

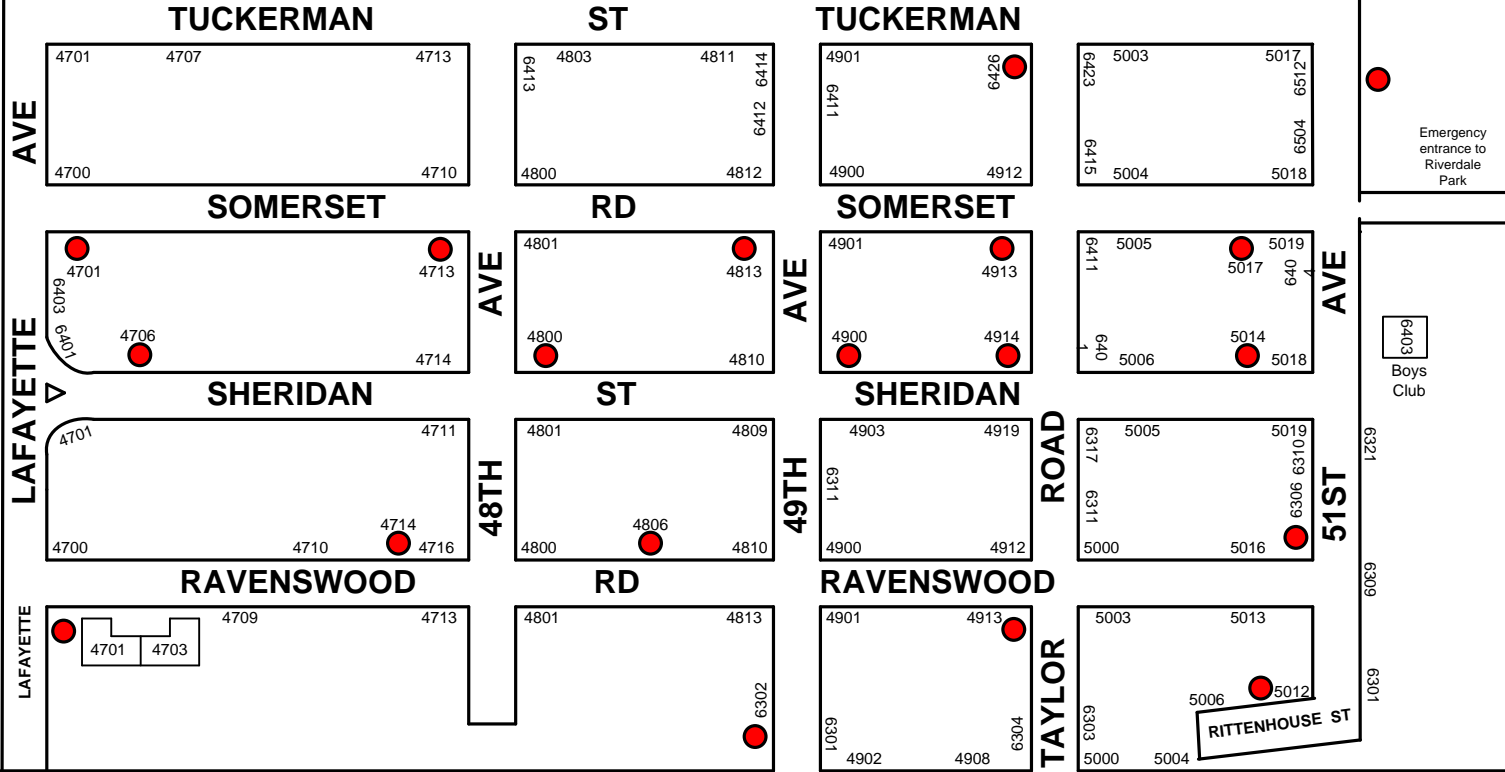
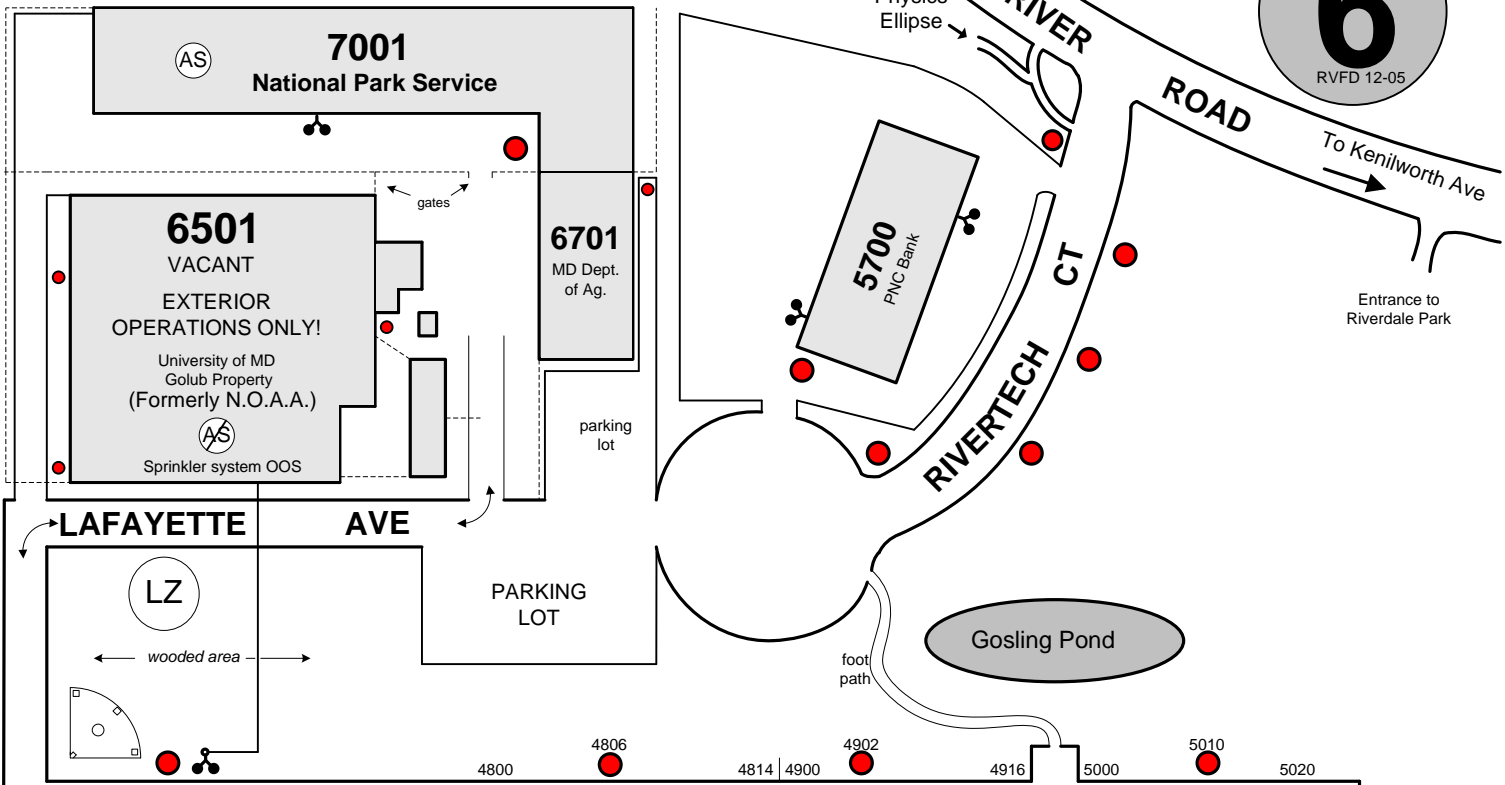
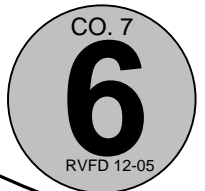
From 7

From 1

ROUTE 410

From 13

No apparatus access to Side Charlie. Foot access via Side Bravo or 5700 Rivertech parking lot



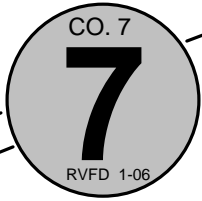
← To Baltimore Ave **EAST WEST** **HIGHWAY** To Kenilworth Ave →



See page 2

See page 2





HARTWICK RD

SEE CO. 12 MAPS

GUILFORD

ROWALT DR

DR

7105

7104

7103

7102

7101

7100

7104

7103

7110 EXXON

7100

COLLEGE HEIGHTS DR

7008

7007

7007

7007

7007

7007

7007

7007

7007

7007

7007

7007

7007

7007

6910

6914

6924

6926

6930

6934

6906

6904

6902

6902

6902

6902

6902

6902

6902

6902

6902

6902

6902

6902

6902

6902

6902

6902

6902

6902

6902

6902

6902

6902

6902

6902

6902

6902

6902

6902

6902

6902

6902

6902

6902

6902

6902

6902

6902

6902

6902

6902

6902

6902

6902

6902

6902

6902

6902

6902

6902

PINEWAY

6919

6917

6913

6913

6907

6905

6903

6903

6903

6903

6903

6903

6903

6903

6903

6903

6903

6903

6903

6910

6914

6924

6926

6930

6934

6906

6904

6902

6902

6902

6902

6902

6902

6902

6902

6902

6902

6902

6902

6902

6902

6902

6902

6902

6902

6902

6902

6902

6902

6902

6902

6902

6902

6902

6902

6902

6902

6902

6902

6902

6902

6902

6902

6902

6902

6902

6902

6902

6902

6902

6902

6902

6902

6902

6902

6902

6910

6914

6924

6926

6930

6934

6906

6904

6902

6902

6902

6902

6902

6902

6902

6902

6902

6902

6902

6902

6902

6902

6902

6902

6902

6902

6902

6902

6902

6902

6902

6902

6902

6902

6902

6902

6902

6902

6902

6902

6902

6902

6902

6902

6902

6902

6902

6902

6902

6902

6902

6902

6902

6902

6902

6902

6902

6910

6914

6924

6926

6930

6934

6906

6904

6902

6902

6902

6902

6902

6902

6902

6902

6902

6902

6902

6902

6902

6902

6902

6902

6902

6902

6902

6902

6902

6902

6902

6902

6902

6902

6902

6902

6902

6902

6902

6902

6902

6902

6902

6902

6902

6902

6902

6902

6902

6902

6902

6902

6902

6902

6902

6902

6902

6910

6914

6924

6926

6930

6934

6906

6904

6902

6902

6902

6902

6902

6902

6902

6902

6902

6902

6902

6902

6902

6902

6902

6902

6902

6902

6902

6902

6902

6902

6902

6902

6902

6902

6902

6902

6902

6902

6902

6902

6902

6902

6902

6902

6902

6902

6902



To East-West Highway
From Co. 7

Annacostia River

To Kenilworth Ave
From Co. 9

MADISON ST

48 TH AVE

LONGFELLOW ST

TAYLOR RD

47 TH
LAFAYETTE AVE

INGRAHAM ST

Christian Life Center
5600

5405 Church

5624-5610
LAFAYETTE PLACE

5353
5349
5347
5345

5419
5417
5415
5413
5409
5407
5405

5330
5336
5328
5322
5320
5310
5400

5351
5349
5347
5345
5339
5317
5313
5311

5470
5436
5400

46 TH AVE

5303

4700 4702 4704 4804 4806

5206
5200

5207
5200
4700 4706 4800 4900

5205
5200

4811
4906
4900

5013
5011

4705 4801
5023
4920

5013
5011

4907
4901
4920

5016
5014
5012

5002
5001
4920

5005

4909
4909
4914
4910

4610
4702
4800
4804

4900
4910
4914
4910

50 TH AVE

Edmonston Pumping Station
4923

46 TH AVE
5014
5028
5026
5016
5012
5010
4908
4906
4904
4902
4909
4600

5013
5011
5013
5011
5005
5002
5001
4610

4907
4901
4920
4909
4914
4910
4910
4910

DECATUR ST

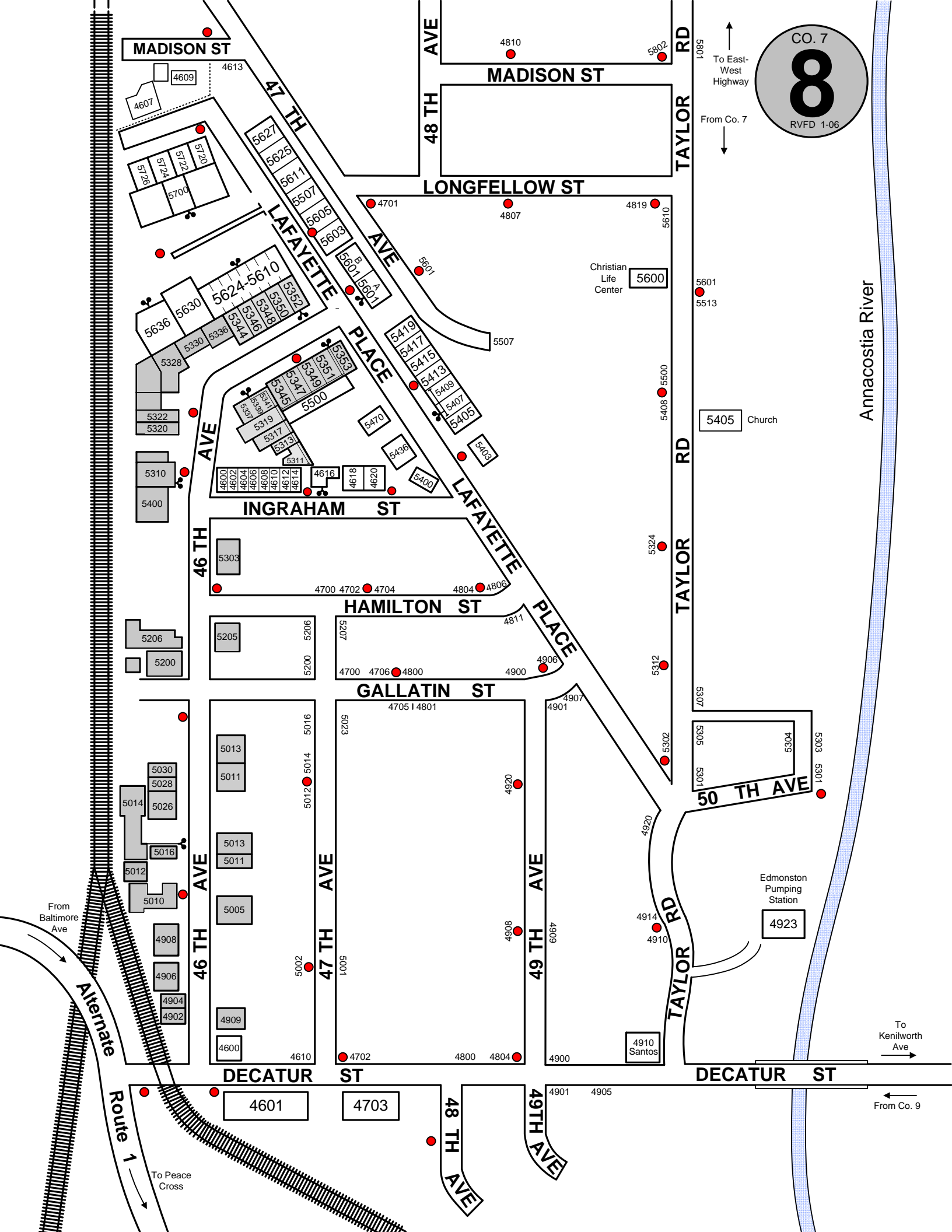
4601
4703

48 TH AVE
49 TH AVE

DECATUR ST

Alternate Route 1
From Baltimore Ave

To Peace Cross





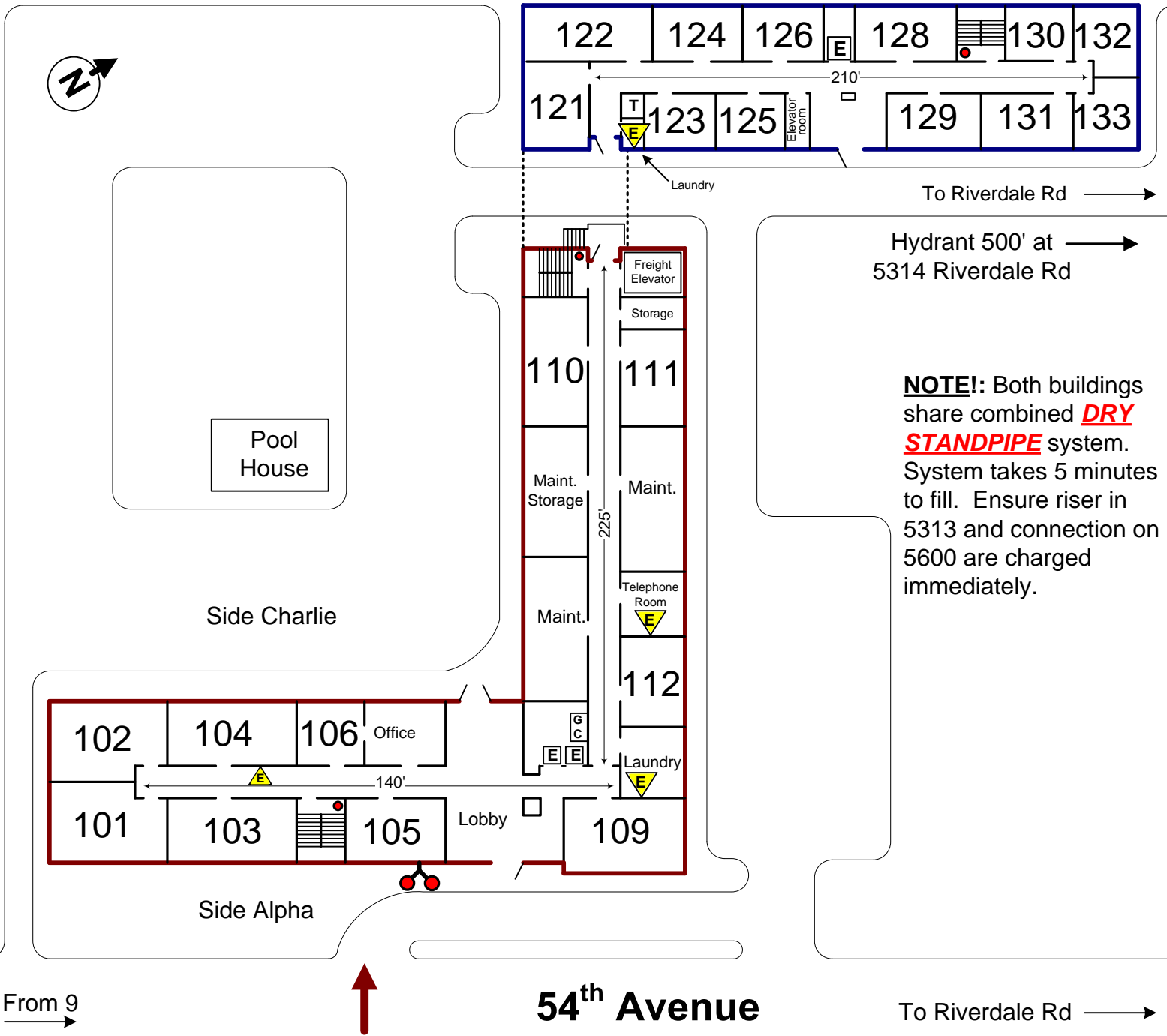
5313 Riverdale Road S.O.P.

- 1st Engine: layout from 5314 Riverdale Rd
Run 3" line to riser in stairwell.
- 2nd Engine: Pick up hydrant 5314
- 3rd Engine: Layout from 5609 54th Ave
Take connection 5600 54th Ave
- 4th Engine: Pick up hydrant 5609 54th Ave

FIRST FLOOR LAYOUT
(Upper floors layout next page)

5313 Riverdale Road

↓ (5 Stories)



Hydrant 500' at
5314 Riverdale Rd →

NOTE!: Both buildings share combined **DRY STANDPIPE** system. System takes 5 minutes to fill. Ensure riser in 5313 and connection on 5600 are charged immediately.

← Hydrant 100' at 5505

5600 54th Ave

(6 Stories)

(Upper floors layout next page)



5600 54th Ave. S.O.P.

- 1st Engine: Layout from 5609 54th Ave
Take connection 5600 54th Ave
- 2nd Engine: Pick up hydrant at 5609 54th Ave
- 3rd Engine: Layout from 5314 Riverdale Rd
Run 3" into stairwell riser of 5313
- 4th Engine: Pick up hydrant 5314 Riverdale Rd

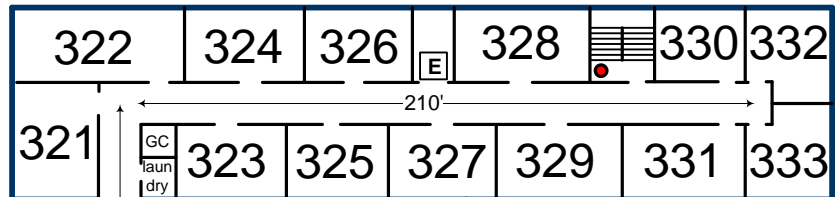
UPPER FLOORS LAYOUT



5313 Riverdale Road



Hatch to roof
in stairway

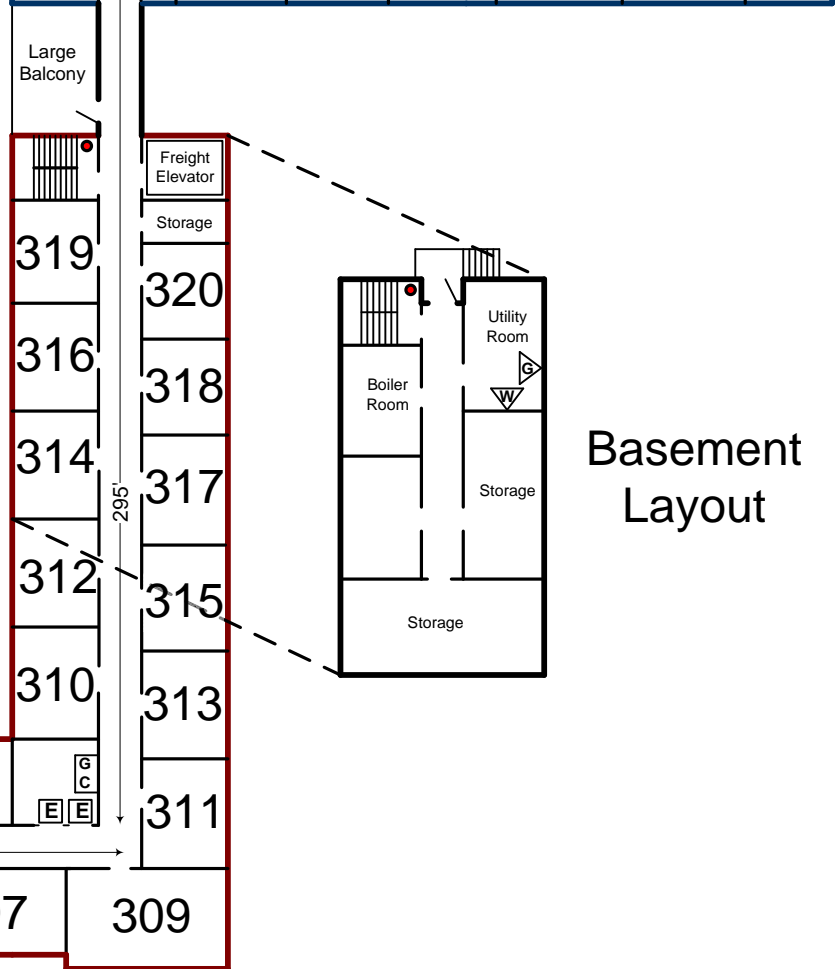


Gas: Two gas meters
in basement of 5600
54th Ave

Electrical Boxes: First floor
utility rooms. Breakers control
tiers of units i.e. 111, 211, 311
etc.

Water Shutoff = Basement Utility Room

GC = garbage chute (o.o.s.)



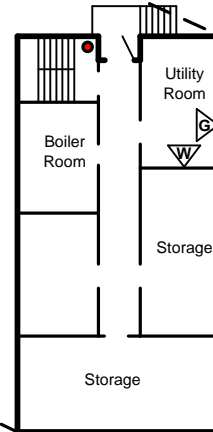
Side Charlie

Hatch to roof
in stairway

Side Alpha



5600 54th Ave



Basement
Layout

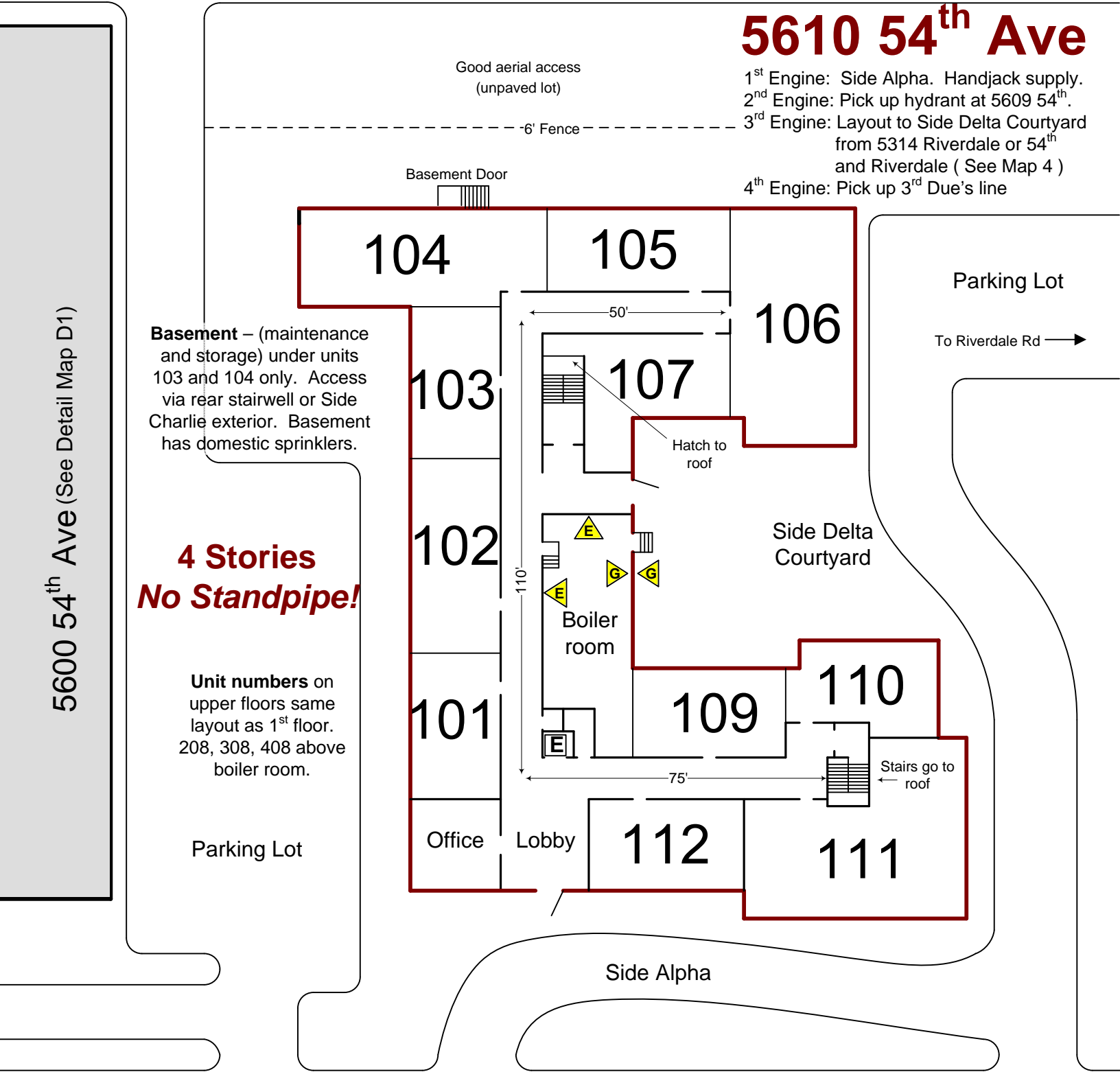
5313 Riverdale Road
(See Detail Map D1)



To Riverdale Rd →

5610 54th Ave

- 1st Engine: Side Alpha. Handjack supply.
- 2nd Engine: Pick up hydrant at 5609 54th.
- 3rd Engine: Layout to Side Delta Courtyard from 5314 Riverdale or 54th and Riverdale (See Map 4)
- 4th Engine: Pick up 3rd Due's line



54th Avenue

To Riverdale Rd →



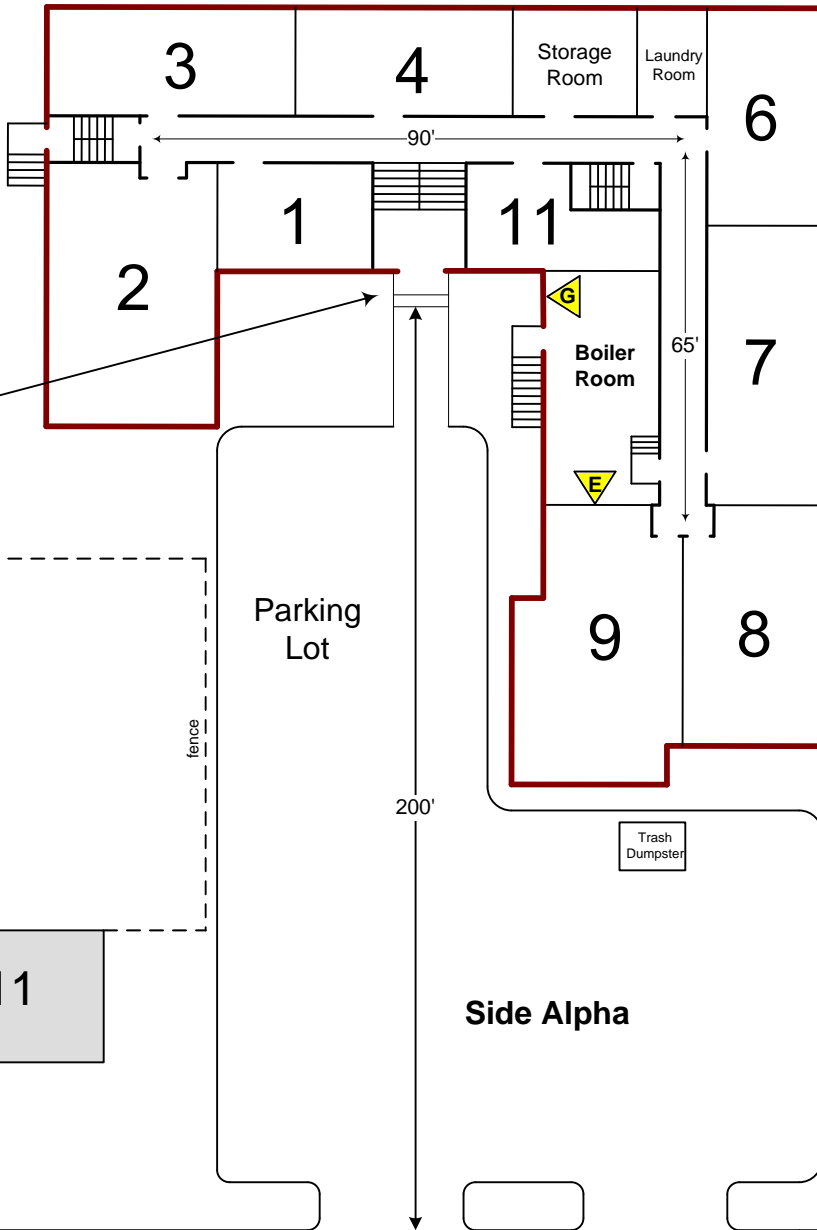
Front stairwell has door to roof
Rear stairwell has hatch / ladder to roof

← 5409 Riverdale Rd →

5609 54th Ave

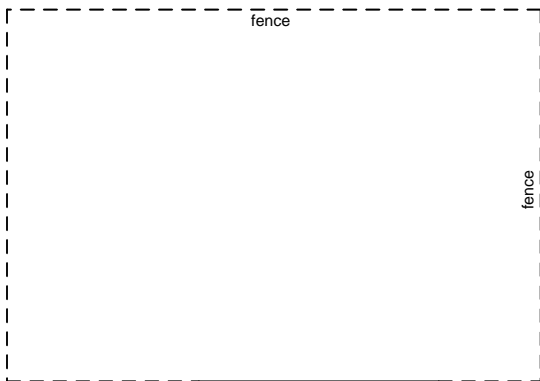


Main Entrance: Split foyer stairs access bottom floor (1-11) and middle floor (101-111) only. Proceed right or left to interior stairs to access upper floor (201-211).



**3 Stories
 No Standpipe!**

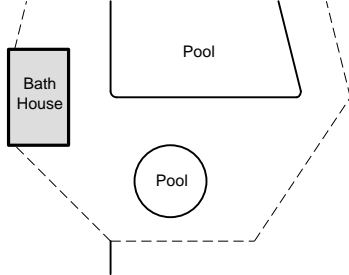
**Gas, Electrical and
 Water Shutoffs :**
 All in 1st floor boiler room



← To Riverdale Rd

54th Avenue

← From 9



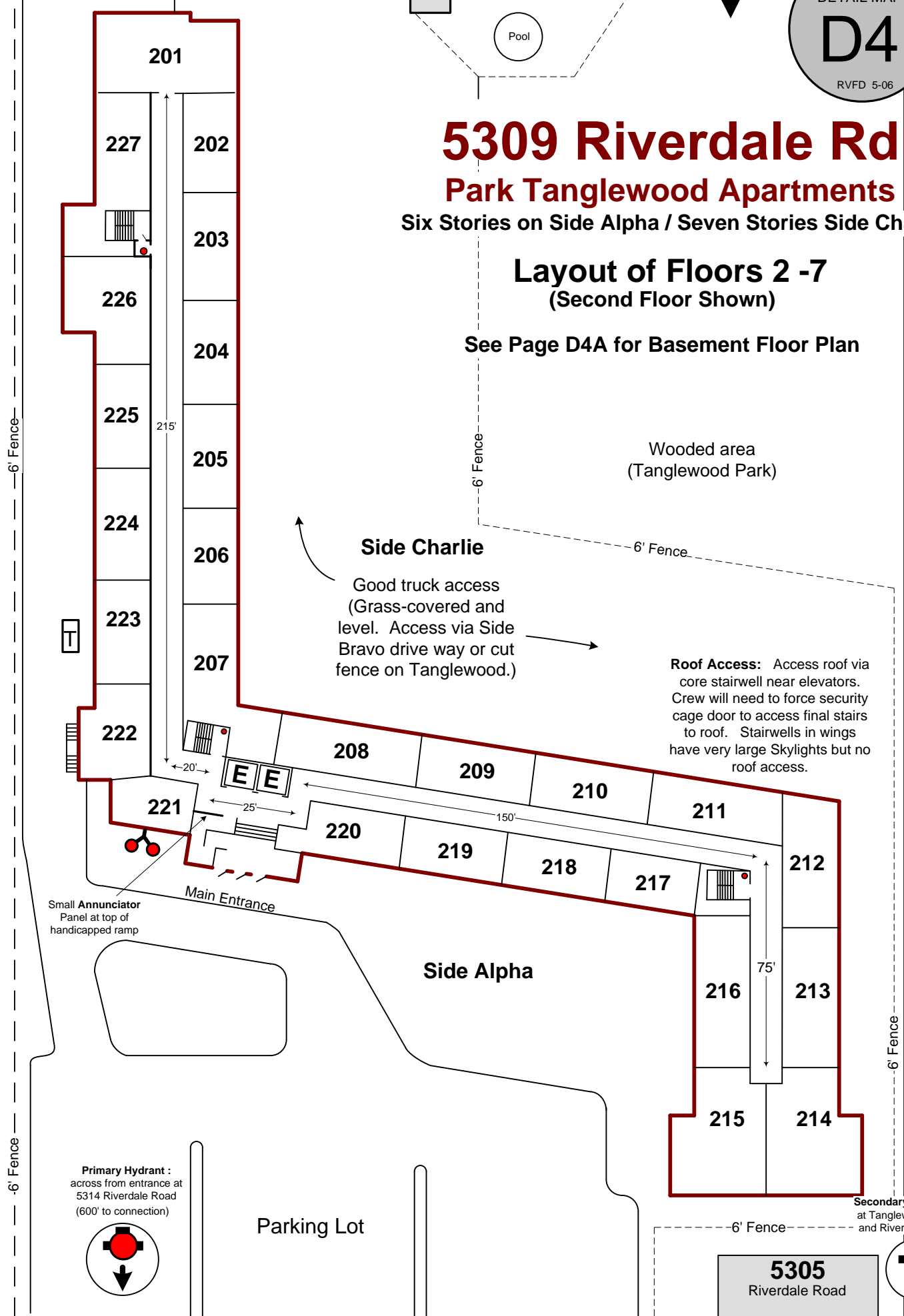
5309 Riverdale Rd

Park Tanglewood Apartments

Six Stories on Side Alpha / Seven Stories Side Charlie

Layout of Floors 2 - 7 (Second Floor Shown)

See Page D4A for Basement Floor Plan



Wooded area
(Tanglewood Park)

Side Charlie

Good truck access
(Grass-covered and level. Access via Side Bravo drive way or cut fence on Tanglewood.)

Roof Access: Access roof via core stairwell near elevators. Crew will need to force security cage door to access final stairs to roof. Stairwells in wings have very large Skylights but no roof access.

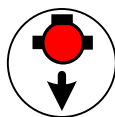
Side Alpha

Main Entrance

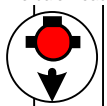
Small Annunciator Panel at top of handicapped ramp

Parking Lot

Primary Hydrant :
across from entrance at
5314 Riverdale Road
(600' to connection)



Secondary Hydrant :
at Tanglewood Drive
and Riverdale Road



5305
Riverdale Road

5313 Riverdale Road

Tanglewood Drive

6' Fence

6' Fence

6' Fence

6' Fence

6' Fence

215'

20'

25'

150'

75'

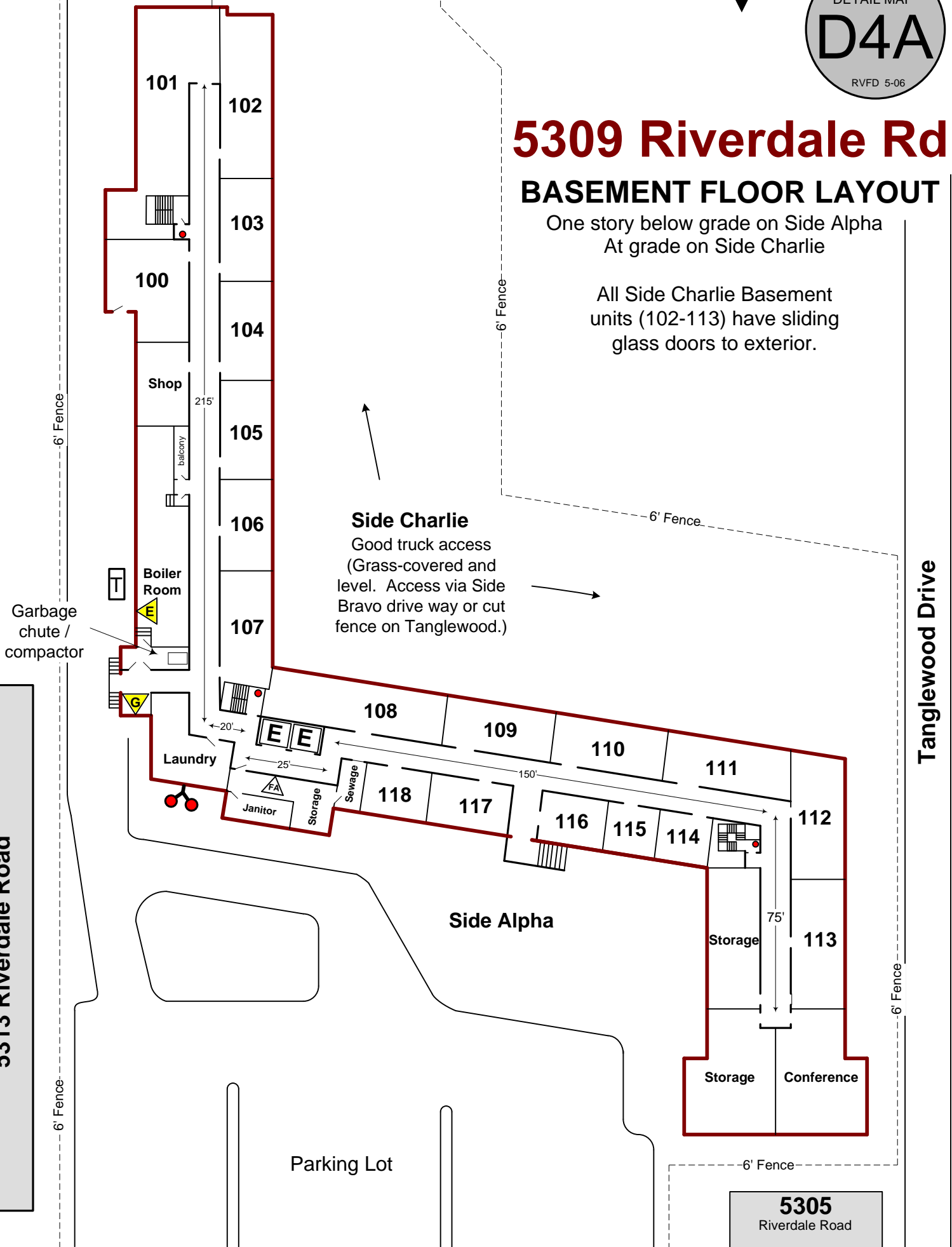


5309 Riverdale Rd

BASEMENT FLOOR LAYOUT

One story below grade on Side Alpha
At grade on Side Charlie

All Side Charlie Basement units (102-113) have sliding glass doors to exterior.



Side Charlie
Good truck access
(Grass-covered and level. Access via Side Bravo drive way or cut fence on Tanglewood.)

Side Alpha

Parking Lot

5305
Riverdale Road



4410 Oglethorpe Street

Oglethorpe House Condominiums

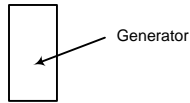
Eight Stories with a Basement



Floor Plan for Floors 1 – 8 Shown.

See Page D6A for **Basement** Floor Plan

7-11 Store

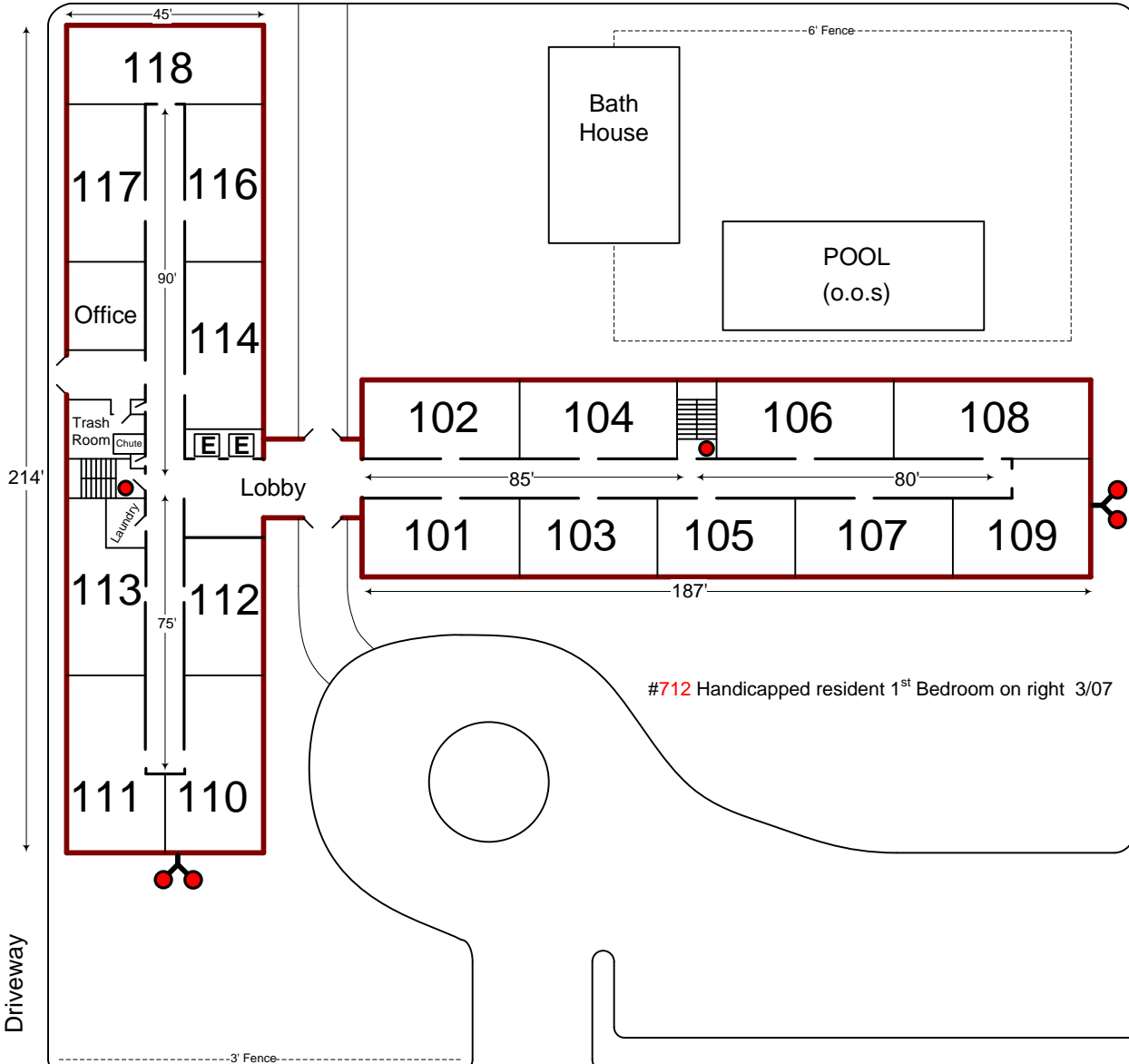


Parking Lot

Hydrant across Balt. Ave



Baltimore Avenue



Oglethorpe Street

44th Ave



No apartments below Ground level. Basement under 114 through 118 only. Apartment numbers are the same on every floor (i.e.: 712 is above 612)

Electric Shutoff: Basement storage room (beneath 113)

Gas Shutoff: Basement boiler room (beneath 117)

Water Shutoff: Basement storage room (beneath 111)

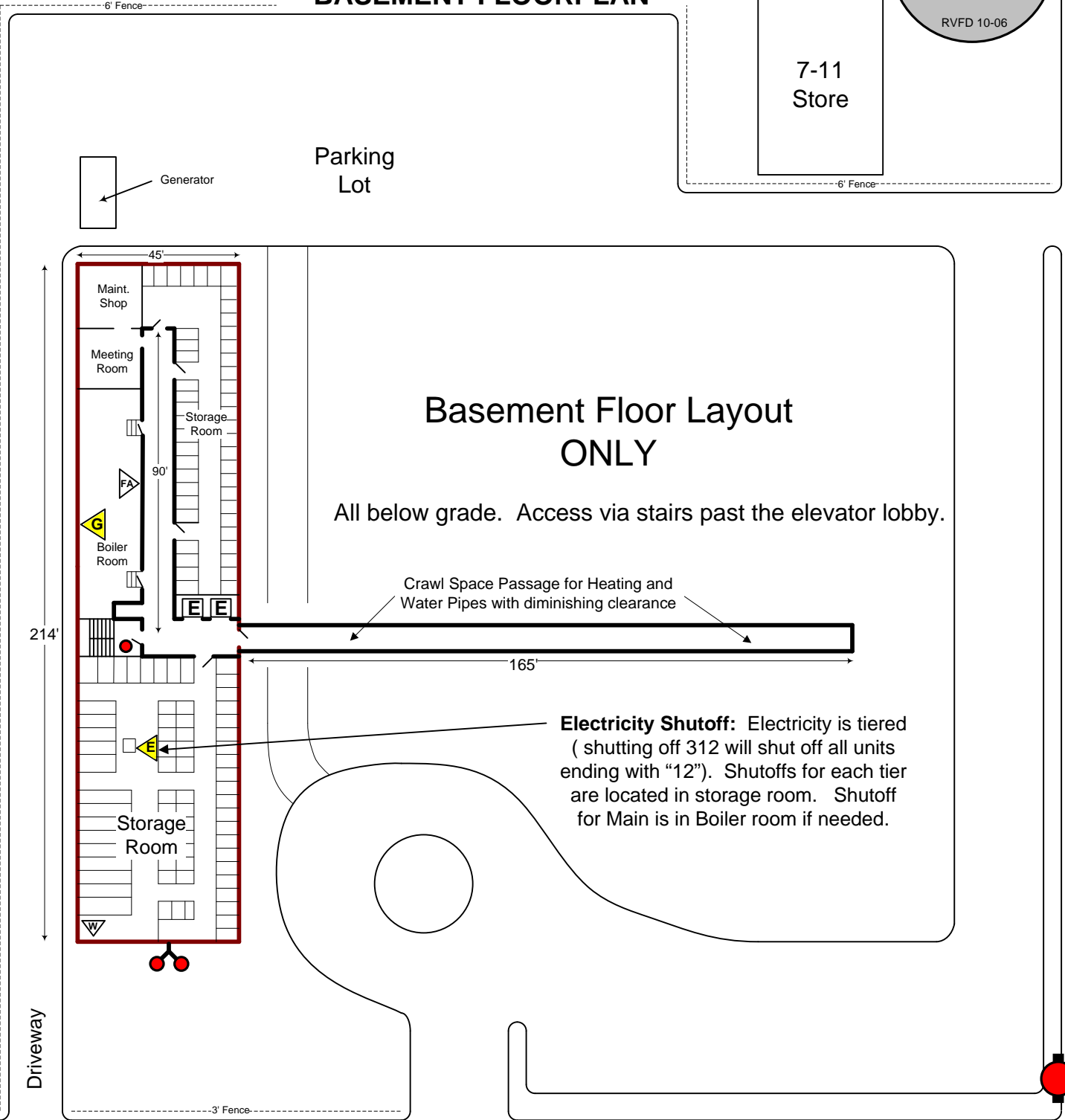
Basement Access: Access via west wing stairs near elevators only.

4410 Oglethorpe Street

Oglethorpe House Condominiums



BASEMENT FLOORPLAN



44th Ave



No apartments below Ground level. Basement under 114 through 118 only.
Apartment numbers are the same on every floor (i.e.: 712 is above 612)

- Electric Shutoff:** Basement storage room
- Gas Shutoff:** Basement boiler room (beneath 117)
- Water Shutoff:** Basement storage room (beneath 111)
- Basement Access:** Access via west wing stairs near elevators only.

OGLETHORPE ST.

ST.



FROM
7
↓

McCarthy Activities Center

Fotos Arts Center

Parking Lot

St. John DeMatha Hall

4310

Old Wing

New Wing

4313

Main Building

AS

AS

MADISON ST.

44TH AVE.

- 5807
- 5805
- 5803
- 5801

ST

ALLEY

- 5725
- 5723
- 5721
- 5719
- 5717
- 5715

5710 Community Center

5702

5700

ALLEY

- 4400
- 4402
- 4404
- 4406
- 4408
- 4410
- 4412
- 4414
- 4416
- 4418
- 4420
- 4422
- 4424

5700

(ROUTE 1)

LUSTINE ST.

44TH AVE.

- 5801
- 5803
- 5805
- 5807
- 5809
- 5811
- 5813
- 5815

ALLEY

- 5727
- 5725
- 5721
- 5719
- 5717
- 5715
- 5713

- 5701
- 5703
- 5705
- 5707
- 5709
- 5711

- 5621
- 5619
- 5617
- 5615
- 5613
- 5611
- 5609
- 5607
- 5605
- 5603
- 5601

ALLEY

- 5626
- 5624
- 5622
- 5620
- 5618
- 5616
- 5614
- 5612
- 5610
- 5608

LONGFELLOW ST.

- 4401
- 4403
- 4405
- 4407
- 4409
- 4411

5623

- 5621
- 5619
- 5617
- 5615
- 5613
- 5611
- 5609
- 5607
- 5605
- 5603
- 5601

ALLEY

- 4418
- 4416
- 4414
- 4412
- 4410
- 4408
- 4406
- 4404
- 4402
- 4400

KENNEDY ST.

- 4419
- 4421
- 4423

- 5616
- 5614
- 5612
- 5610
- 5608
- 5606

BALTIMORE AVE

KENNEDY ST.

KENNEDY ST.

ST.

44TH AVE.

- 5515
- 5513
- 5511
- 5507
- 5505

4317

4315

- 5604
- 5602
- 5600

5516

5506

5504

5500 VERIZON

5500

↑

FROM 55

43 RD PL

43RD AVE

JEFFERSON ST

JEFFERSON ST

Nicholson

Madison

Longfellow

Kennedy

Madison

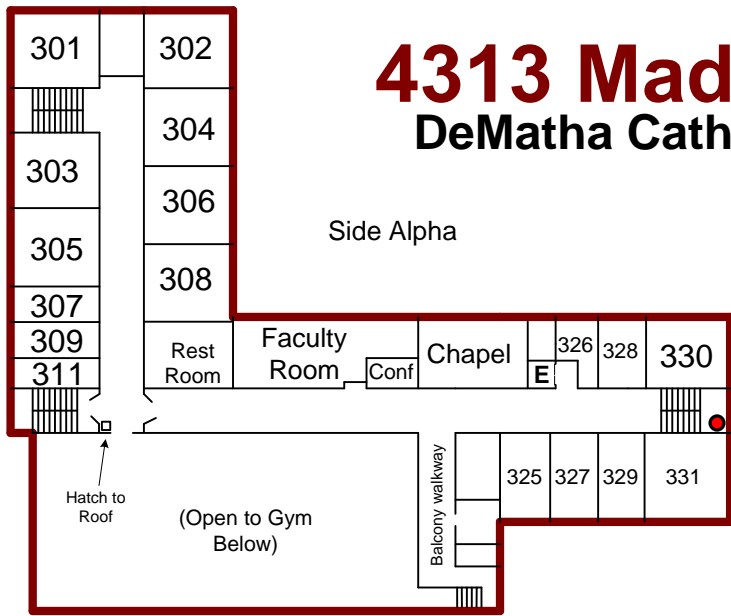
Longfellow

Kennedy

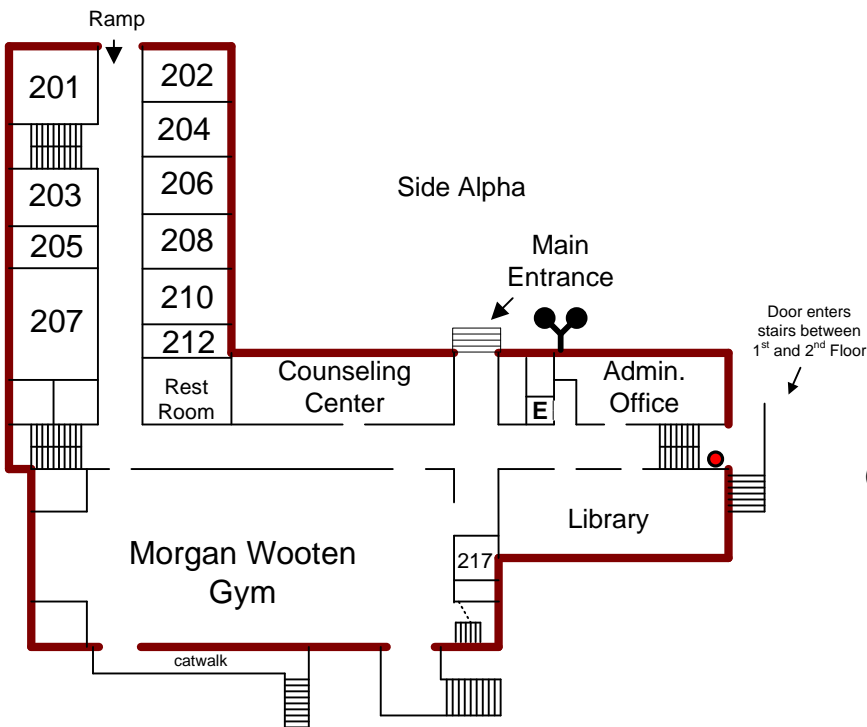
Cleveland

4313 Madison Street

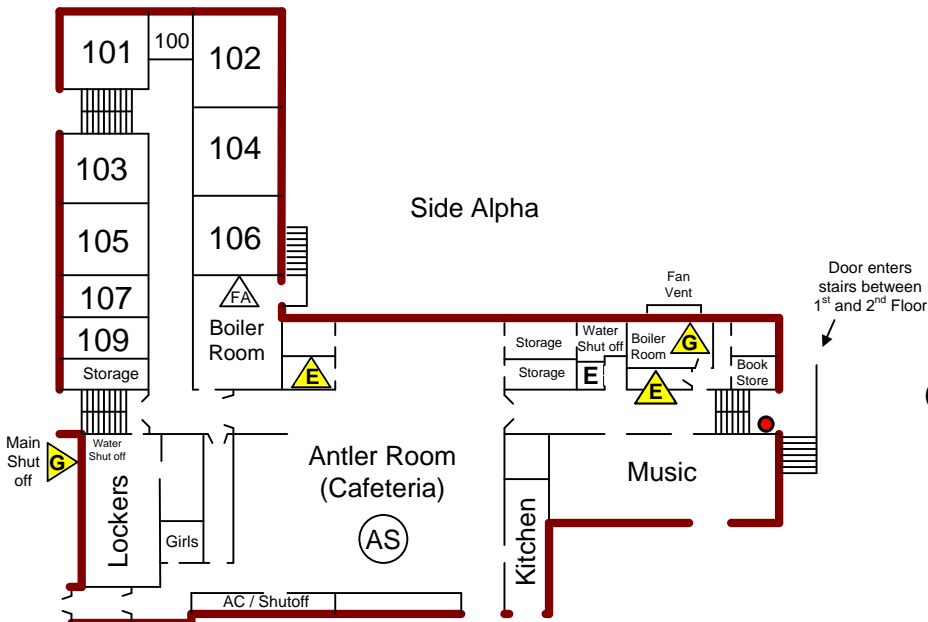
DeMatha Catholic High School



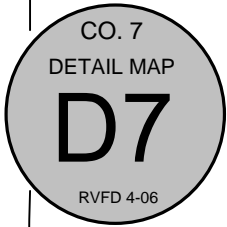
3rd / Top Floor



2nd / Main Floor
(½ Story Above Grade on Side Alpha)



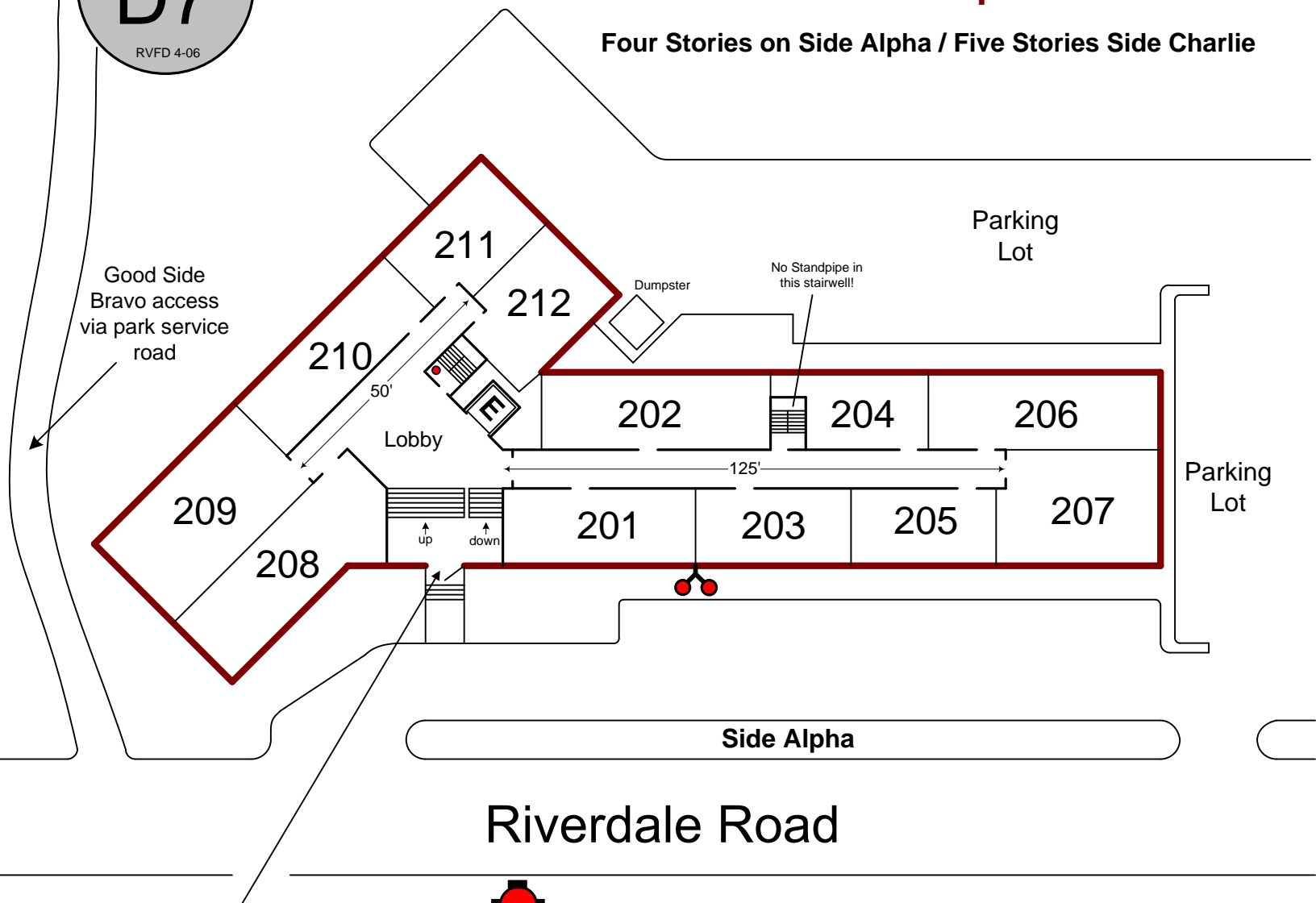
1st / Bottom Floor
(½ Story Below Grade on Side Alpha)



5023 Riverdale Road

Calvert Park Apartments

Four Stories on Side Alpha / Five Stories Side Charlie

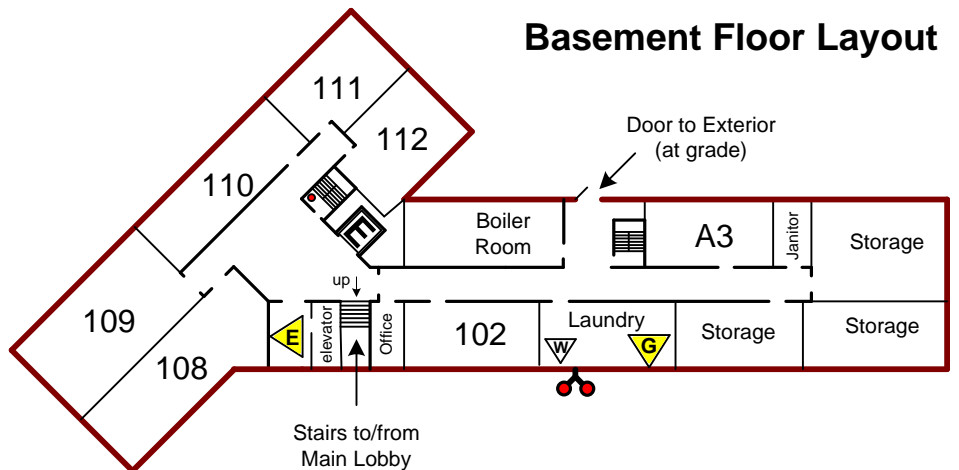


Main Entrance: Split foyer stairs access bottom floor (A3-112) and second floor (201-212) only. Proceed to stairwell in lobby next to the elevator to access floors 3-5. ***This is the only stairwell with a standpipe.***

Secondary Hydrant →
(250' at 5011 Riverdale Road)

Roof Access: Hatch in lobby stairwell near elevator only.

Basement Floor Layout



5006 Riverdale Road

Riverdale Elementary School

Two Stories / Sprinklered / NO Standpipe



5008

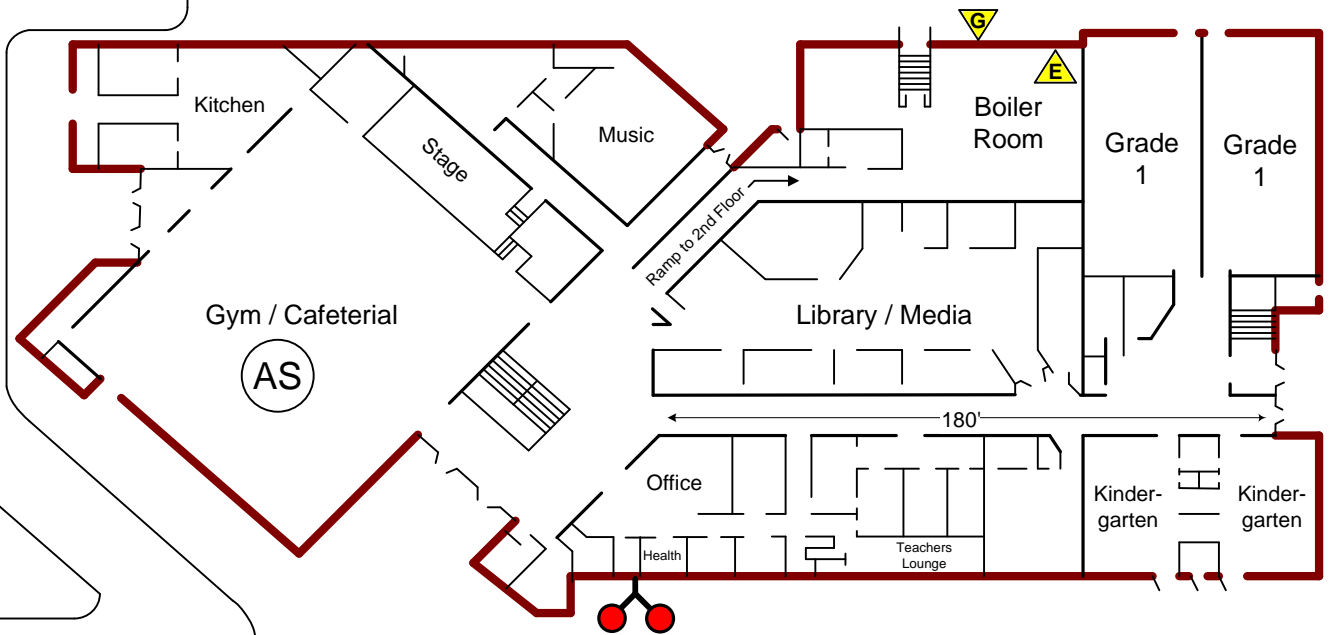


Queensbury Road

Dead End

To East West Highway

Taylor Road



Side Alpha

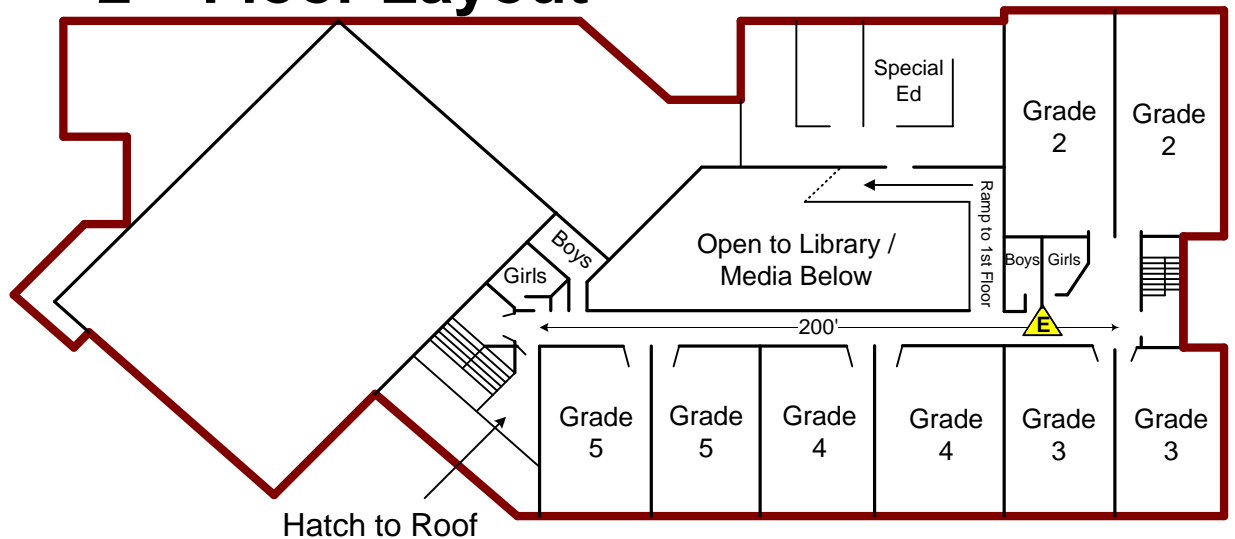
Riverdale Road

To Kenilworth Avenue



5011

2nd Floor Layout



4409 East West Highway

Crescent Cities Nursing Home

Four Stories / Sprinklered / Standpipe

CO. 7
DETAIL MAP

D9

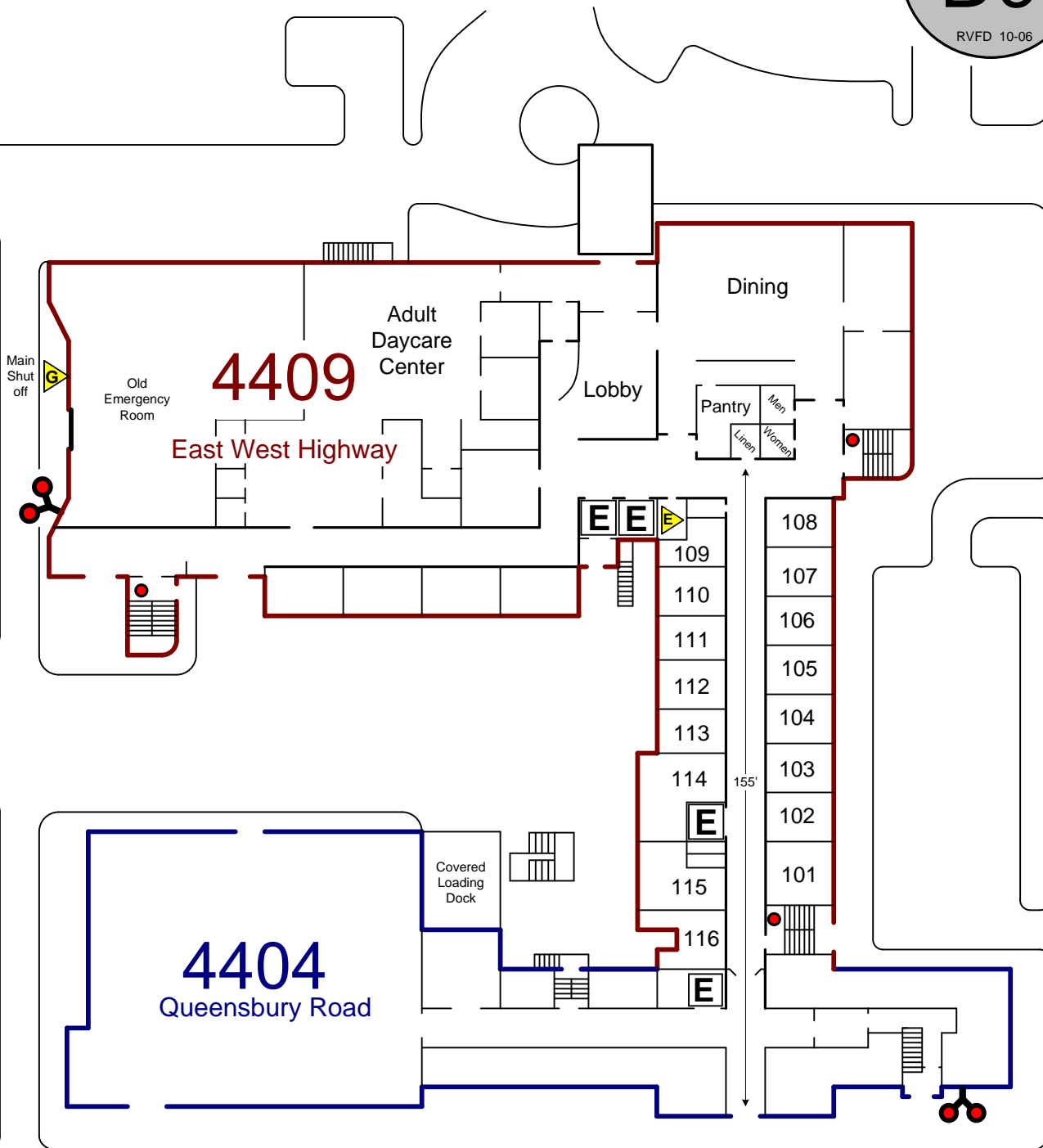
RVFD 10-06

6204 6206

To East West Highway

44th Avenue


44th Place



From Co. 1

Queensbury Road

To Baltimore Ave

 4409 Main Electric Shutoffs
in Basement Electrical
Room near Boiler room.

Mr. Wynter 301-699-2000



5400 and 5500 block of 54th Ave

For buildings 5410, 5412, 5424, and 5422 Lay out from driveway and turn into front parking lot.

For buildings 5414, 5416, 5418, and 5420 lay from drive way straight in to side "D" of 5418.

For buildings 5500 thru 5514 pull into parking area and hand-jack layout back to hydrant through fence.

For buildings 5516 through 5526 lay from entrance back to the parking area.

