



# 4410 Oglethorpe Street

## Oglethorpe House Condominiums

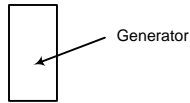
Eight Stories with a Basement



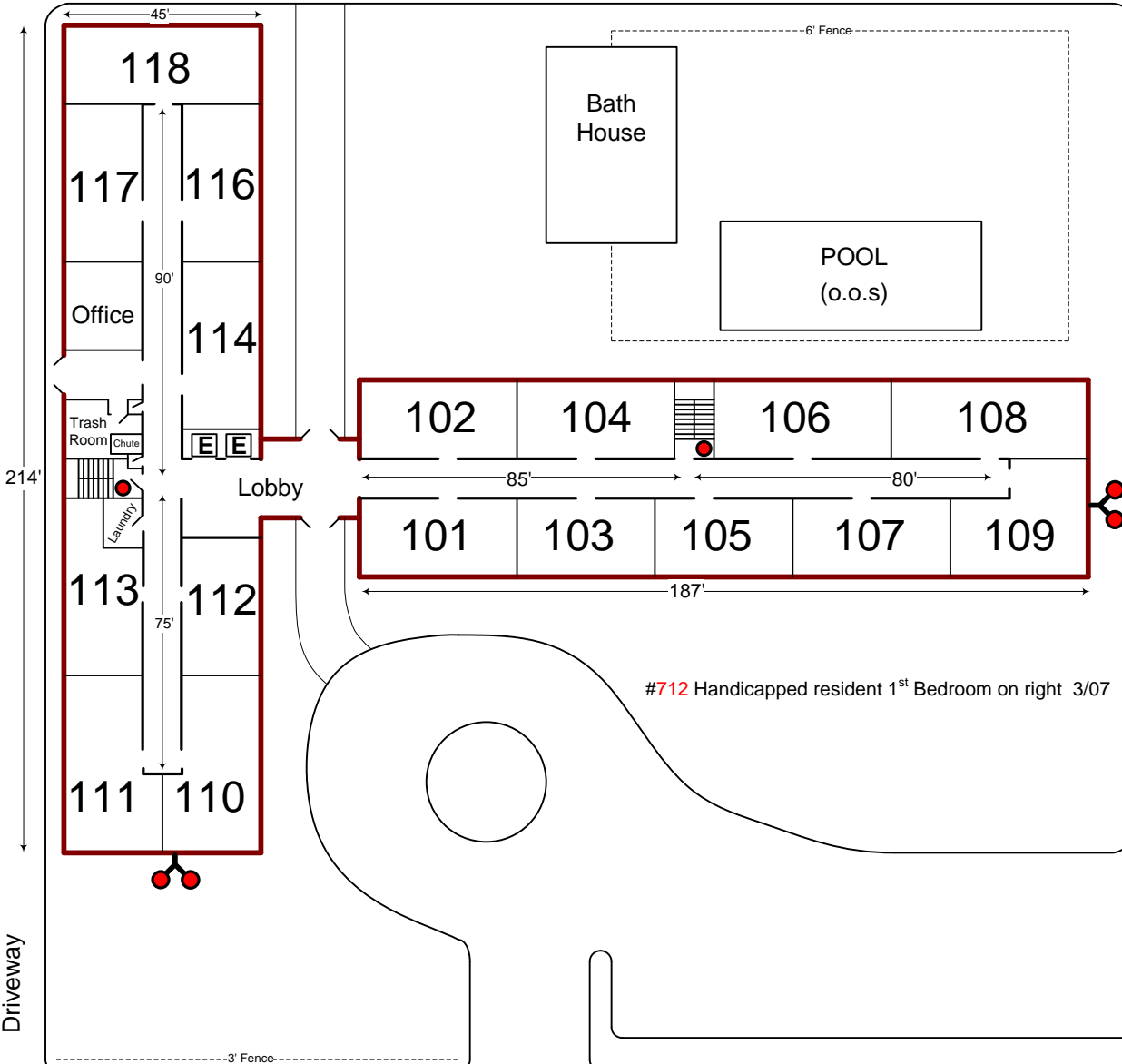
### Floor Plan for Floors 1 – 8 Shown.

See Page D6A for **Basement** Floor Plan

7-11 Store



Parking Lot



Hydrant across Balt. Ave

Baltimore Avenue

## Oglethorpe Street

44<sup>th</sup> Ave

No apartments below Ground level. Basement under 114 through 118 only. Apartment numbers are the same on every floor ( i.e.: 712 is above 612 )

**Electric Shutoff:** Basement storage room (beneath 113)

**Gas Shutoff:** Basement boiler room (beneath 117)

**Water Shutoff:** Basement storage room (beneath 111)

**Basement Access:** Access via west wing stairs near elevators only.